

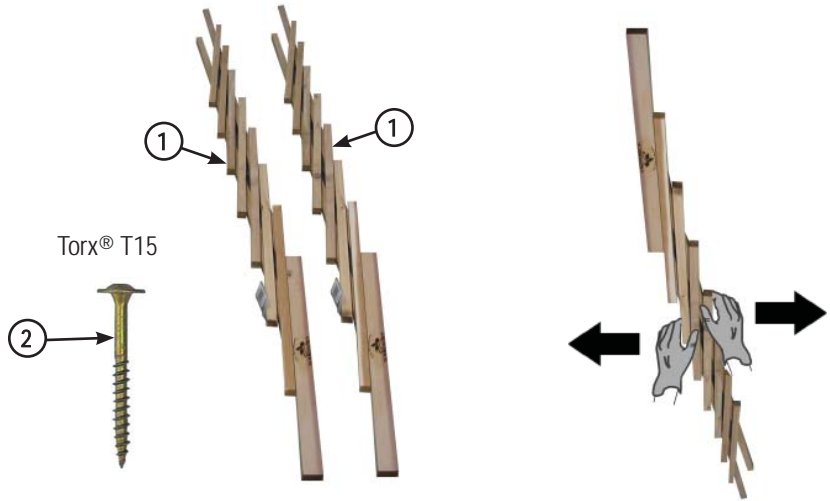
1 Parts Identification

Item #: LT 24-72

If any pieces are missing or replacement parts are required, contact Gronomics at 1-855-299-6727.

NOTE: To unfold the trellis, hold the trellis upright and place hands as shown and pull apart.

NOTE: The trellis can be placed directly in the soil or can be secured into any raised or elevated garden beds.



Parts List

ITEM	QTY.	PART #	DESCRIPTION
1	2	LT24-72	Folding Trellis, 24"W x 72"H
2	4	CS8-112ZY	Screw, #8 x 1-1/2" GRK

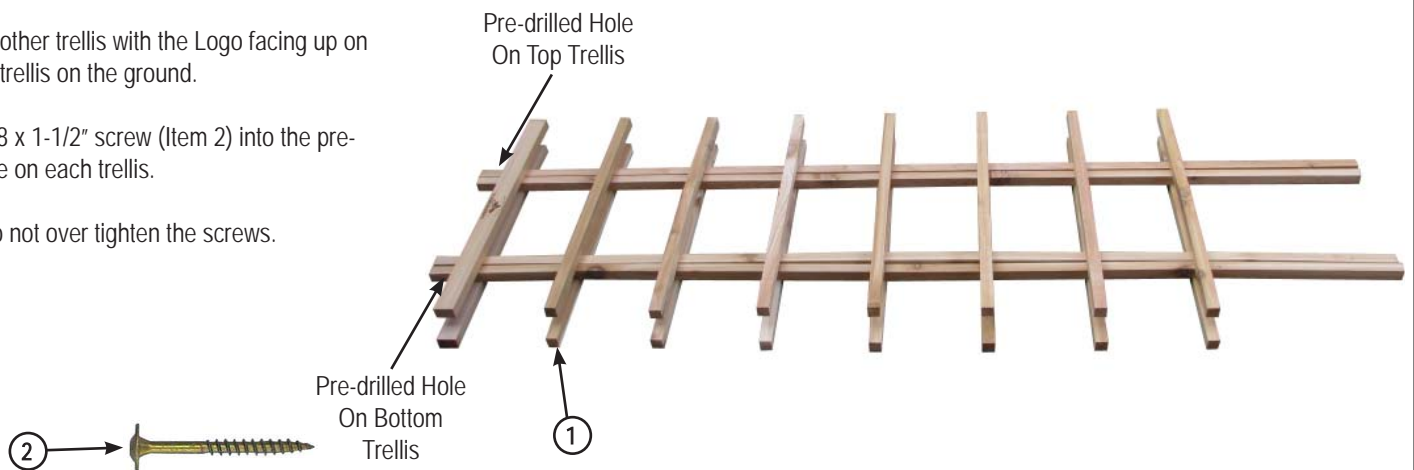
2 Trellis Ladder Assembly

Place one trellis (Item 1) on the ground with the Logo facing down.

Place the other trellis with the Logo facing up on top of the trellis on the ground.

Install a #8 x 1-1/2" screw (Item 2) into the pre-drilled hole on each trellis.

NOTE: Do not over tighten the screws.



Packaged & Inspected by:

Date:

Continued

3 Trellis Ladder Assembly (Continued)

Stand the trellis ladder upright and spread the bottom of the trellis ladder approximately 24" apart.

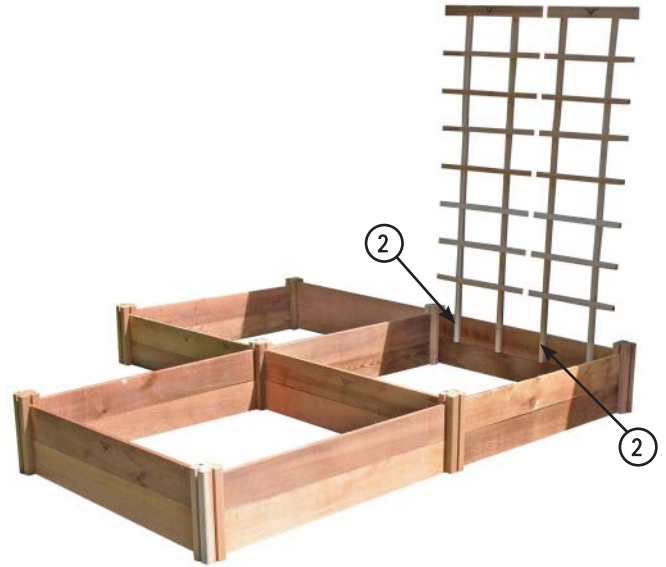
NOTE: The trellis ladder can be placed directly into the soil or secured to any raised or elevated garden bed.



5 Trellis Ladder Installation Options (Continued)

Place the trellis (Item 1) into garden bed as shown. Align the bottom of the trellis with the bottom of the top side rail, center the trellis between the posts and make sure the trellis is straight.

Install four #8 x 1-1/2" screws (Item 2) into the pre-drilled holes.



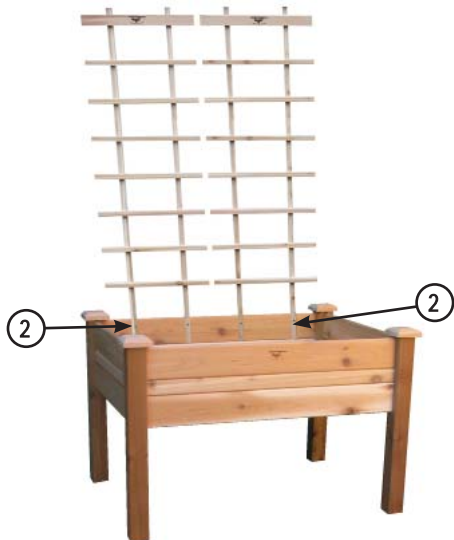
4 Trellis Ladder Installation Options

The trellis ladder can be separated and the two trellises can be mounted into the ground or installed onto any raised or elevated garden bed.

Steps 4 - 6 show three configurations, create your own configuration.

Place the trellis (Item 1) into garden bed as shown. Align the bottom of the trellis with the bottom of the top side rail, center the trellis between the posts and make sure the trellis is straight.

Install four #8 x 1-1/2" screws (Item 2) into the pre-drilled holes.



6 Trellis Ladder Installation Options (Continued)

Place the trellis (Item 1) into garden bed as shown. Align the bottom of the trellis with the bottom of the top side rail, center the trellis between the posts and make sure the trellis is straight.

Install four #8 x 1-1/2" screws (Item 2) into the pre-drilled holes.

